



## About us

Launched in 1997, AsiaMedic is the leading healthcare provider in Singapore. Patients come to AsiaMedic for one-stop health screening and advanced medical imaging services. We provide a comprehensive range of general imaging as well as sub-specialised field of radiology imaging in Oncology, Cardiac, Neuroradiology, ENT and Musculoskeletal all in a convenient, professional outpatient and service-oriented environment.

- ✓ **One-stop solution** for comprehensive health screening, equipped with evidence-based medical knowledge and advanced technology
- ✓ **Advanced diagnostic imaging** includes MRI, CT, bone densitometry (DEXA), ultrasound, mammography, and X-ray
- ✓ **Nuclear medicine (PET/CT)**, used for cancer diagnosis and staging. We provide cancer imaging with one of the industry's most reliable scanners which incorporates a PET scanner with a multi-slice CT scanner
- ✓ Other services include an Aesthetic Clinic and International Family Clinic

## Revolution™ Apex Elite

Designed to provide unparalleled image quality, low dose and exceptional clinical solutions for both routine and challenging cases in all care areas for every patient.

- |           |            |
|-----------|------------|
| Cardiac   | Stroke     |
| Oncology  | MSK        |
| Chest     | Paediatric |
| Emergency | Obesity    |

## AsiaMedic Imaging Centre

**Address:**  
350 Orchard Road #08-00  
Shaw House  
Singapore 238868

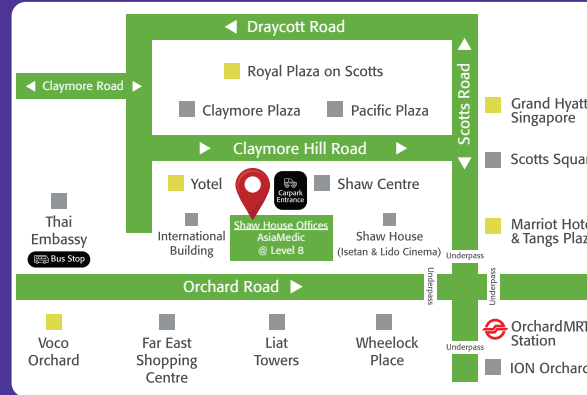
**Operating Hours:**  
Mon to Fri: 8.30am to 5.30pm  
Sat: 8.30am to 12.30pm  
Sun and PH: Closed

**Office Tel:** (65) 6789 8888

**WhatsApp:** (65) 9863 0032

**Website:** <https://www.asiamedic.com.sg>

**Email:** [info@asiamedic.com.sg](mailto:info@asiamedic.com.sg)



## AsiaMedic Sunway Imaging

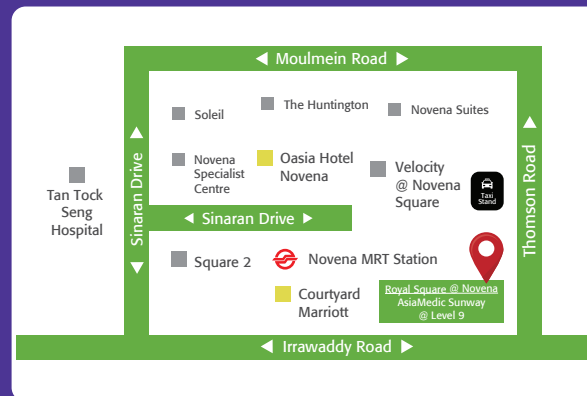
**Address:**  
101 Irrawaddy Road #09-01  
Royal Square Medical Centre  
Singapore 329565

**Operating Hours:**  
Mon to Fri: 8.30am to 5.30pm  
Sat: 8.30am to 12.30pm  
Sun and PH: Closed

**Office Tel:** (65) 6422 6688

**WhatsApp:** (65) 8339 9072

**Email:** [info\\_novena@asiamedic.com.sg](mailto:info_novena@asiamedic.com.sg)



# Revolution™ Apex Elite

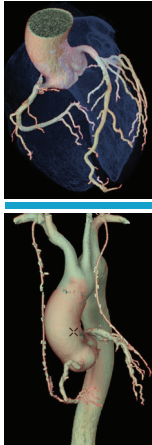
Experience uncompromised image quality, the fastest rotation speed<sup>1</sup> and Effortless Workflow



Nearly one third of deaths worldwide are caused by cardiovascular disease. CT plays an important role in diagnosis.

We offer high definition, one-beat cardiac scanning mode for all heart rates with or without beta blockers. Which means less preparation, less iodine dose<sup>5</sup> and less radiation with clearer images, no matter your heart rate.

Remarkably clear image quality with low radiation dose for more confident diagnosis.



### Cardiac



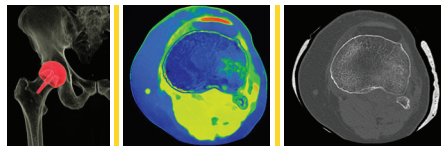
### MSK



Prosthetics and implants can cause artefact in CT.

Smart Metal Artifact Reduction (MAR) with a single scan and Spectral CT can reduce the artefact experienced and improve image quality.

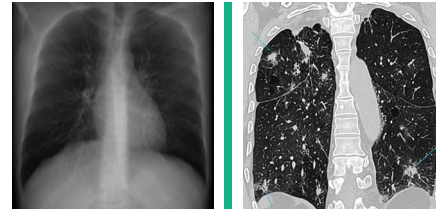
Spectral CT imaging can also generate calcium-suppressed images to help evaluate bone marrow edema caused by bone fractures and bruising. This may benefit patients who have contraindications to MR imaging.



According to the World Health Organization (WHO), lung cancer is the most common diagnosed cancer and the leading cause of cancer death globally.<sup>3</sup>

Screening can reduce lung cancer mortality by up to 20% in high-risk individuals.<sup>4</sup>

The Revolution™ Apex Elite enables lung cancer and occupational screening CT at lowest possible dose with great image quality. The scan speed is fast so if holding your breath is challenging we can help.



### Chest



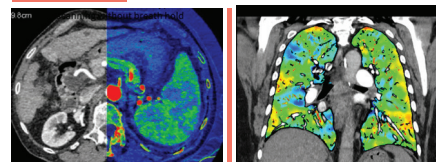
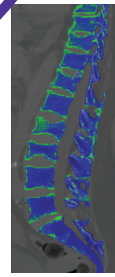
### Oncology



Cancer is the leading cause of death worldwide.<sup>6</sup>

Tumours can be complex. It is important for clinicians to see detail, texture and margins.

Access to on-demand next generation spectral imaging and TrueFidelity™ image reconstruction means scanning and follow up can be streamlined and more accurate.

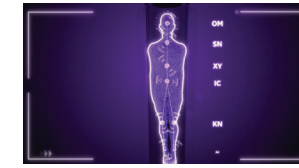


## Introducing the Revolution™ Apex Elite:

GE HealthCare has proudly partnered with AsiaMedic to deliver cutting edge technology, supporting them as early adopters of new technology to deliver clinical excellence in CT service.

- Industry's fastest rotation speed.<sup>1</sup>
- Exceptional image quality.
- Low dose CT without compromise.

Come and experience the benefits of Effortless Workflow today



### Effortless workflow

Some patients can find a CT scan overwhelming and perhaps feel some anxiety.

The Effortless Workflow experience orchestrates many parameters so that they are tailored to the patient, enabling focus on the patient experience.

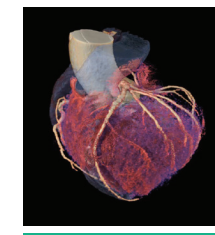
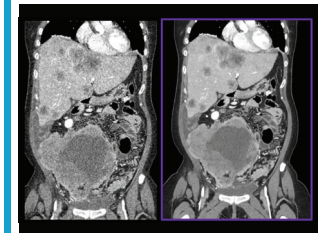
The Revolution™ Apex Elite has a wide bore with ambient lighting and a whisper quiet drive to make the experience less overwhelming and faster for those that need it.



### TrueFidelity

Deep learning image reconstruction can be used to produce breakthrough TrueFidelity™ images for single energy and dual energy exams to elevate image quality to the next level.

The first in the world to achieve FDA approval, TrueFidelity™ improves lesion detectability and is reported to achieve dose reduction ranging from 38-96%.<sup>2</sup>



### Industry's fastest

The Revolution™ Apex Elite has the industry's fastest gantry rotation speed.<sup>1</sup> With a 160mm detector and a powerful tube and intelligent motion correction it has a uniform temporal resolution of 19.5msec to freeze the whole heart at any heart rate.

3. <https://www.who.int/news/item/01-02-2024-global-cancer-burden-growing-amidst-mounting-need-for-services>  
4. <https://www.ncbi.nlm.nih.gov/pmc/articles/PMC10379173/>

5. <https://www.gehealthcare.com/products/computed-tomography/revolution-family/revolution-apex-platform>  
6. <https://www.who.int/news-room/facts-sheets/detail/cancer>

1. <https://www.gehealthcare.com/products/computed-tomography/revolution-family/revolution-apex-platform>  
2. <https://www.gehealthcare.com/-/jpsmedia/gehc/us/files/products/computed-tomography/apex-platform/truefidelity-evidence-white-paper-+-released-jp23222xx.pdf?rev=1>